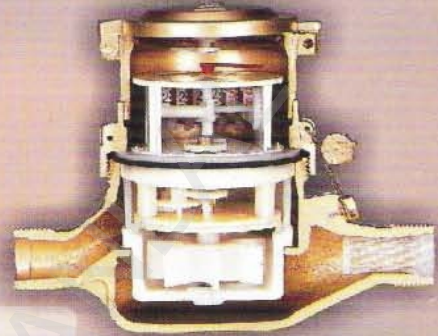


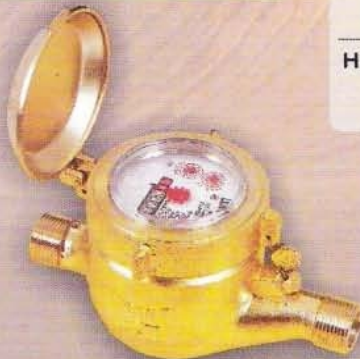
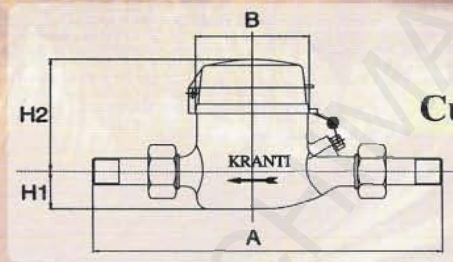
Specifications of Water Meter IS: 779/94 Dry Dial Straight Reading Class-A & Magnetic Drive Class-B



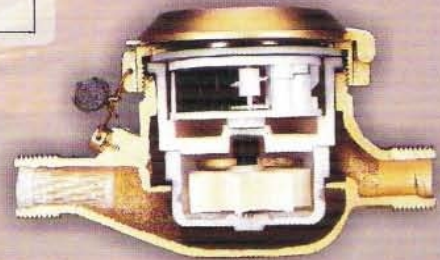
Multi Jet Class-A



Cut Section for Class-A



Multi Jet Class-B



Cut Section for Class-B

Meters are of Dry Inferential Straight reading size 15, 20, 25, 40 & 50 confirming to Class-A & Class-B of IS : 779/1994 Water Meters and their parts are made of selected materials of high accuracy, long duration and ensured by perfect machining with modern and high precision equipment in our plant.

Dimensions

The dimensions unit in mm

Meter Size	Length		Height (Max)	Min. Registration in Lts.		maximum Recording in Kilo-Litres
	Including Nipple	width (Max)		Class-A	Class-B	
	A	B				
15	250	100	H ₁ .50 - H ₂ . 180	0.1	0.1	99999
20	290	130	H ₁ .60 - H ₂ .240	0.1	0.1	99999
25	380	170	H ₁ .65 - H ₂ .260	0.1	0.1	99999
40	430	210	H ₁ .75 - H ₂ .300	1	1	999999
50	470	270	H ₁ .115 - H ₂ .300	1	1	999999

Meter Performance Data

Meter Size	Maximum Flow Rate Q _{max} KL/Hr.	Nominal Flow Rate on KL/Hr.	Transitional Flow Rate Qt L/Hr.		Minimum Starting Flow Rate Q _{min} L/Hr.		Metering Accuracy	
			Class-A	Class-B	Class-A	Class-B	In the lower region of flow Q _{min} in (inclusive) to Qt (inclusive)	In the upper region of flow Qt (inclusive) to Q _{max} (inclusive)
15	3	1.5	150	120	60	30	+5%	+2%
20	5	2.5	250	200	100	50	+5%	+2%
25	7	3.5	350	280	140	70	+5%	+2%
40	20	10	1000	800	400	200	+5%	+2%
50	30	15	1500	1200	600	300	+5%	+2%

Head Loss

Not exceeding 0.25 Kg/Cm² at Q_n

Not exceeding 1 Kg/Cm² at Q_{max}

Maximum Test Pressure 20 Kg/Cm²

Working Pressure 16 Kg/Cm²

Temperature Suitability 45°C