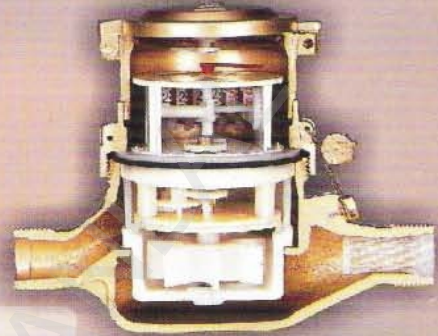


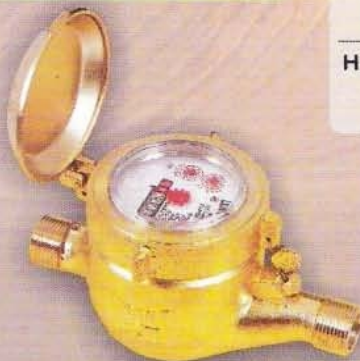
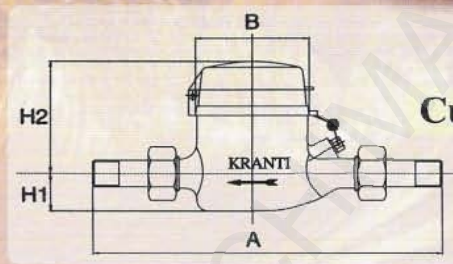
## Specifications of Water Meter IS: 779/94 Dry Dial Straight Reading Class-A & Magnetic Drive Class-B



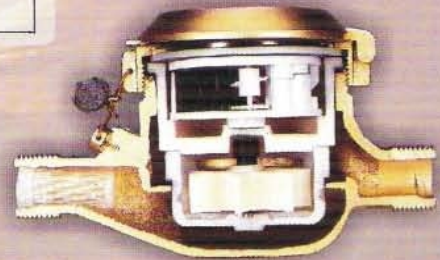
**Multi Jet Class-A**



**Cut Section for Class-A**



**Multi Jet Class-B**



**Cut Section for Class-B**

Meters are of Dry Inferential Straight reading size 15, 20, 25, 40 & 50 confirming to Class-A & Class-B of IS : 779/1994 Water Meters and their parts are made of selected materials of high accuracy, long duration and ensured by perfect machining with modern and high precision equipment in our plant.

### Dimensions

The dimensions unit in mm

Meter Size	Length		Height (Max)	Min. Registration in Lts.		maximum Recording in Kilo-Litres
	Including Nipple	width (Max)		Class-A	Class-B	
	A	B				
15	250	100	H <sub>1</sub> .50 - H <sub>2</sub> . 180	0.1	0.1	99999
20	290	130	H <sub>1</sub> .60 - H <sub>2</sub> .240	0.1	0.1	99999
25	380	170	H <sub>1</sub> .65 - H <sub>2</sub> .260	0.1	0.1	99999
40	430	210	H <sub>1</sub> .75 - H <sub>2</sub> .300	1	1	999999
50	470	270	H <sub>1</sub> .115 - H <sub>2</sub> .300	1	1	999999

### Meter Performance Data

Meter Size	Maximum Flow Rate Q <sub>max</sub> KL/Hr.	Nominal Flow Rate on KL/Hr.	Transitional Flow Rate Qt L/Hr.		Minimum Starting Flow Rate Q <sub>min</sub> L/Hr.		Metering Accuracy	
			Class-A	Class-B	Class-A	Class-B	In the lower region of flow Q <sub>min</sub> in (inclusive) to Qt (inclusive)	In the upper region of flow Qt (inclusive) to Q <sub>max</sub> (inclusive)
15	3	1.5	150	120	60	30	+5%	+2%
20	5	2.5	250	200	100	50	+5%	+2%
25	7	3.5	350	280	140	70	+5%	+2%
40	20	10	1000	800	400	200	+5%	+2%
50	30	15	1500	1200	600	300	+5%	+2%

Head Loss

Not exceeding 0.25 Kg/Cm<sup>2</sup> at Q<sub>n</sub>

Not exceeding 1 Kg/Cm<sup>2</sup> at Q<sub>max</sub>

Maximum Test Pressure 20 Kg/Cm<sup>2</sup>

Working Pressure 16 Kg/Cm<sup>2</sup>

Temperature Suitability 45°C